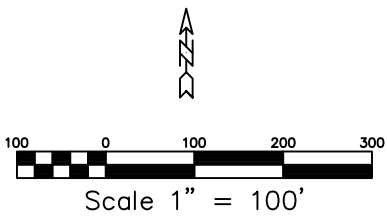
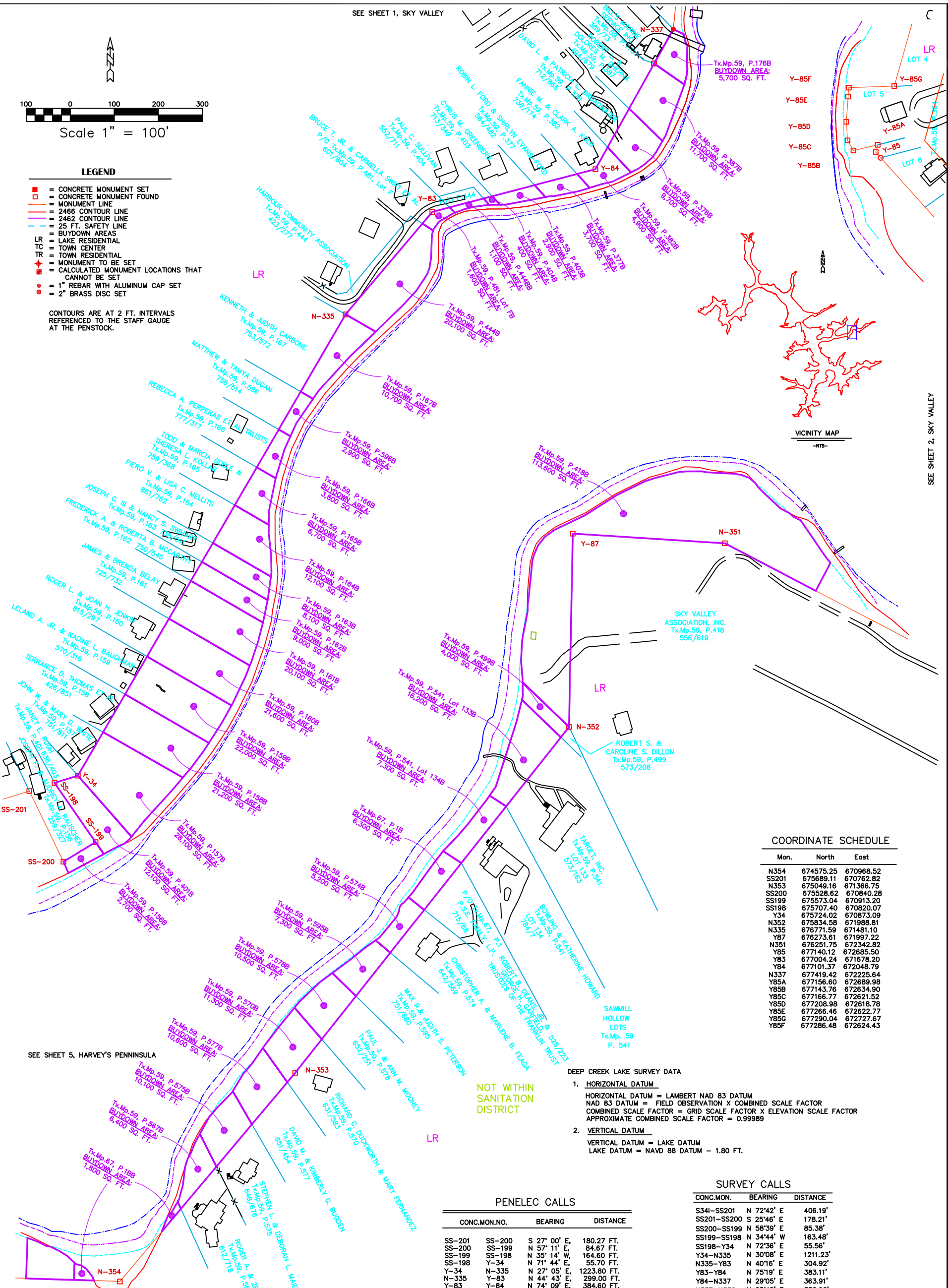


SEE SHEET 1, SKY VALLEY



- LEGEND**
- = CONCRETE MONUMENT SET
  - = CONCRETE MONUMENT FOUND
  - = MONUMENT LINE
  - = 2466 CONTOUR LINE
  - = 2462 CONTOUR LINE
  - = 25 FT. SAFETY LINE
  - = BUYDOWN AREAS
  - LR = LAKE RESIDENTIAL
  - TC = TOWN CENTER
  - TR = TOWN RESIDENTIAL
  - ⊕ = MONUMENT TO BE SET
  - ⊕ = CALCULATED MONUMENT LOCATIONS THAT CANNOT BE SET
  - ⊕ = 1" REBAR WITH ALUMINUM CAP SET
  - ⊕ = 2" BRASS DISC SET

CONTOURS ARE AT 2 FT. INTERVALS REFERRED TO THE STAFF GAUGE AT THE PENSTOCK.



**COORDINATE SCHEDULE**

Mon.	North	East
N354	674575.25	670968.52
SS201	675689.11	670782.82
N353	675049.16	671366.75
SS200	675528.62	670840.28
SS199	675573.04	670913.20
SS198	675707.40	670820.07
Y34	675724.02	670873.09
N352	675834.58	671988.81
N335	676771.59	671481.10
Y87	676273.61	671997.22
N351	676251.75	672342.82
Y85	677140.12	672685.50
Y83	677004.24	671678.20
Y84	677101.37	672048.79
N337	677419.42	672225.64
Y85A	677156.60	672689.98
Y85B	677143.76	672634.90
Y85C	677166.77	672621.52
Y85D	677208.98	672618.78
Y85E	677266.46	672622.77
Y85G	677290.04	672727.67
Y85F	677286.48	672624.43

- DEEP CREEK LAKE SURVEY DATA**
- HORIZONTAL DATUM**  
 HORIZONTAL DATUM = LAMBERT NAD 83 DATUM  
 NAD 83 DATUM = FIELD OBSERVATION X COMBINED SCALE FACTOR  
 COMBINED SCALE FACTOR = GRID SCALE FACTOR X ELEVATION SCALE FACTOR  
 APPROXIMATE COMBINED SCALE FACTOR = 0.99989
  - VERTICAL DATUM**  
 VERTICAL DATUM = LAKE DATUM  
 LAKE DATUM = NAVD 88 DATUM - 1.80 FT.

**PENELEC CALLS**

CONC.MON.NO.	BEARING	DISTANCE
SS-201	SS-200	S 27° 00' E, 180.27 FT.
SS-200	SS-199	N 57° 11' E, 84.67 FT.
SS-199	SS-198	N 35° 14' W, 164.60 FT.
SS-198	Y-34	N 71° 44' E, 55.70 FT.
Y-34	N-335	N 27° 05' E, 1223.80 FT.
N-335	Y-83	N 44° 43' E, 299.00 FT.
Y-83	Y-84	N 74° 09' E, 384.60 FT.
Y-84	N-337	N 26° 56' E, 362.30 FT.
N-337	N-338	N 02° 52' E, 343.50 FT.
Y-85G	Y-85F	N 86° 36' E, 103.35 FT.
Y-85F	Y-85E	N 03° 18' E, 20.10 FT.
Y-85E	Y-85D	N 02° 33' E, 57.64 FT.
Y-85D	Y-85C	N 05° 09' W, 42.34 FT.
Y-85C	Y-85B	N 31° 36' W, 26.62 FT.
Y-85B	Y-85A	S 75° 27' W, 56.68 FT.
Y-85A	Y-85	S 14° 20' W, 17.30 FT.
Y-85	Y-86	S 44° 33' E, 456.10 FT.
N-350	N-351	N 63° 35' W, 1334.00 FT.
N-351	Y-87	WEST 366.70 FT.
Y-87	N-352	SOUTH 449.90 FT.
N-352	N-353	S 36° 45' W, 962.00 FT.
N-353	N-354	S 38° 38' W, 618.80 FT.
N-354	N-355	N 89° 22' W, 1215.70 FT.

**SURVEY CALLS**

CONC.MON.	BEARING	DISTANCE
S34I-SS201	N 72°42' E	406.19'
SS201-SS200	S 25°46' E	178.21'
SS200-SS199	N 58°39' E	85.38'
SS199-SS198	N 34°44' W	163.48'
SS198-Y34	N 72°36' E	55.56'
Y34-N335	N 30°08' E	1211.23'
N335-Y83	N 40°16' E	304.92'
Y83-Y84	N 75°19' E	363.11'
Y84-N337	N 29°05' E	363.91'
N337-N338	N 05°48' E	350.90'
N340-Y85G	S 15°47' W	478.20'
Y85G-Y85F	S 88°02' W	103.31'
Y85F-Y85E	S 04°43' W	20.09'
Y85E-Y85D	S 03°59' W	57.62'
Y85D-Y85C	S 03°43' E	42.30'
Y85C-Y85B	S 30°11' E	26.61'
Y85B-Y85A	N 76°53' E	56.56'
Y85A-Y85	S 15°12' W	17.07'
Y85-Y86	S 41°57' E	458.54'
N350-N351	N 62°24' W	1338.83'
N351-Y87	N 86°23' W	346.30'
Y87-N352	S 01°06' W	439.11'
N352-N353	S 38°23' W	1001.92'
N353-N354	S 40°02' W	619.01'
N354-N355	N 88°10' W	1219.49'

© COPYRIGHT - 2000 BY MORGAN C. FRANCE, L.S., P.E. ALL RIGHTS RESERVED

SHT. NO. 6

DRAWING 6  
HARVEY'S PENINSULA

PROJECT  
DEEP CREEK PROJECT  
BUY DOWN SURVEY

PREPARED BY:  
MORGAN C. FRANCE, L.S., P.E.  
10 North Third Street  
Oakland, Maryland 21550  
(301) 334-2305

REVISIONS

NO.	DATE	DESCRIPTION
1	1/04/01	
2	2/12/01	
3	10/03/01	

DRAWN BY: SUSAN N. EVANS PERANDRO  
APPROVED BY: MORGAN C. FRANCE  
and MARGARET A. JORDAN  
DATE: 6/29/00 at 8:50  
DWG: HARVY6  
123\C\DATA\EP\PROJECTS\DC2000\HARVY6